

MANUAL

CENTRAL FILTER

MOVAC[®]

Ferlin
plastics automation

**GALILEISTRAAT 29
7701 SK DEDEMSVAART
THE NETHERLANDS**

CONTENTS

1. INTRODUCTION 4
2. CENTRAL FILTER..... 5
3. SPARE PARTS..... 7

1. INTRODUCTION

This manual is written for the use of a central filter. The filter is intended to protect the pump against dust and small particles.

When in doubt, it is wise to contact your supplier.

2. CENTRAL FILTER

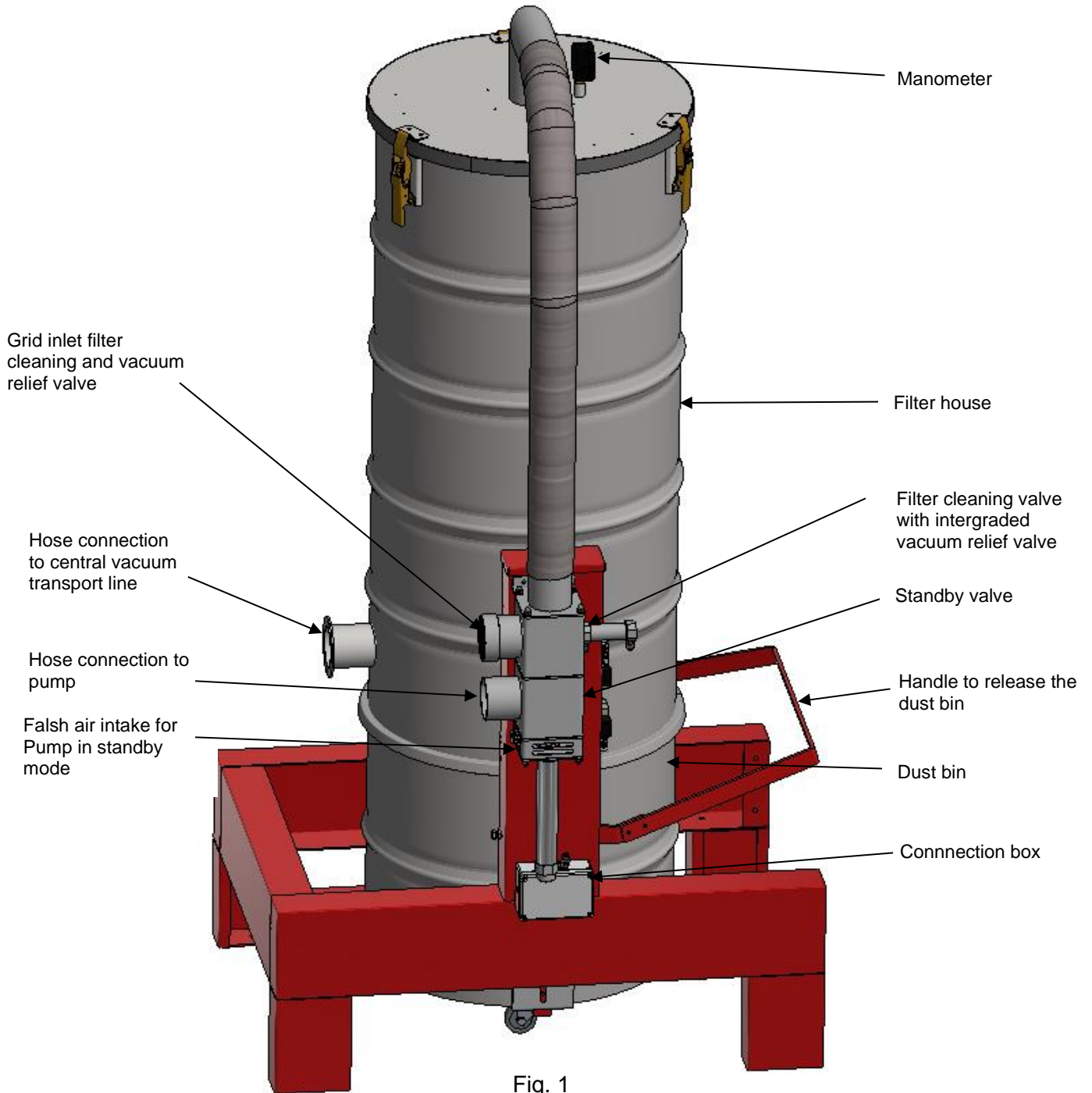
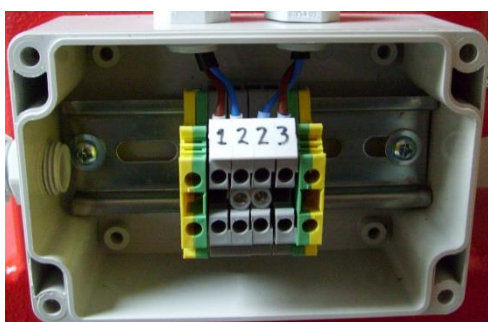


Fig. 1

The central filter is used for dusty material and for systems with more than 1 hopper loader and with pumps of 3 kW and more.

At the installation some hoses have to be connected. On the picture in figure 1 you can see where the hoses have to be connected. The standby-valve and filter cleaning have to be controlled with 24VDC. The connections can be found in the connection box.



- 1 = + standby valve
- 2 = -
- 3 = + filter cleaning

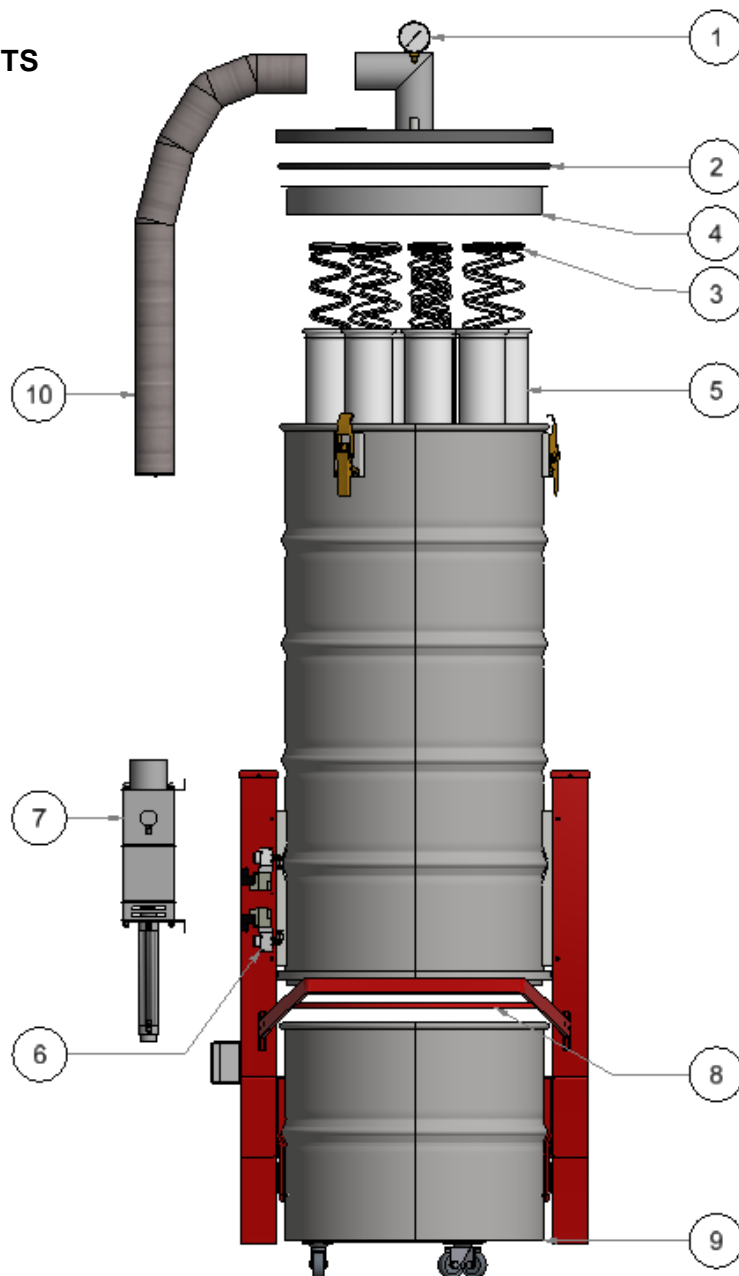
Fig. 2

When the release of the dust collection bin is moved upwards, the dust collection bin will go downwards, provided that the filter is at atmospheric pressure. In this way the dust collection bin can be emptied. The diastolic pressure can be read from the manometer.

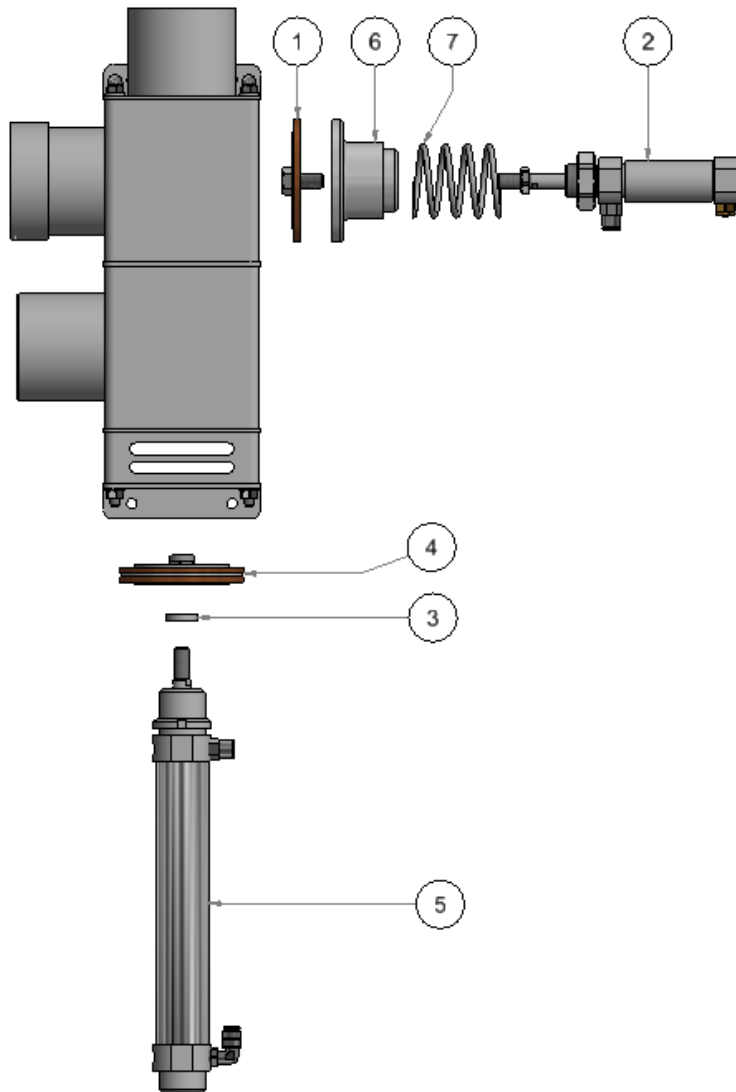
The vacuum relief valve is set on 500mBar pressure difference and ensures that the filter will not go lower in diastolic pressure than 500mBar. This protects the filter house and other equipment which is behind the filter against imploding. Please frequently check if the entrance of the vacuum relief valve is free and that this entrance does not leak continuously.

Never shut off the inlet filter cleaning, this can cause the filter housing to implode.

3. SPARE PARTS



Pos.	Description	Article code
1	Manometer	04M82.40090
2	Rubber U-profile filter plate	04M99.0F813
3	Filter spring	04M1A.682RV
4	Filter plate	04M95.17230
5	Filter bag	04M11.52731
6	5/2 Solenoid valve	04P69.YOC6Q
7	Complete stand-by and filter cleaning valve	04M01.99220
8	Rubber sealing	04M01.69504
9	Dust bin	04M89.06063
10	PU hose \varnothing 70mm L=125 cm	02M1W.70000



Pos.	Description	Article code
1	Filter cleaning valve set (2 parts)	04M01.99020
2	Cylinder (filter cleaning) $\varnothing 25$ stroke 25	01P69.Y2525
3	Settle ring	04M01.NLK15
4	Stand-by valve set (5 parts)	04M01.99011
5	Cylinder (standby valve) $\varnothing 32$ stroke 100	01P69.10622
6	Guide bush	04M01.LK036
7	Compression spring	01M19.R6450